

2" AND LARGER METER, BY-PASS AND VAULT
BACKFLOW PROTECTION LOCATED ELSEWHERE

METER VAULT DIMENSIONS (INSIDE)		
METER SIZE	WIDTH (MIN.)	LENGTH (MIN.)
2" & SMALLER	5' - 0"	6' - 0"
3" & 4"	6' - 0"	8' - 0"
6" & LARGER	CONTACT WATER DEPT.	

NOTE: METER VAULT SHALL BE LOCATED IN A NON-TRAFFIC AREA.

NOTE: PIPING FOR DOMESTIC METERS 2" AND SMALLER SHALL BE TYPE K COPPER WITH COPPER FITTINGS OR BRASS PIPING WITH CAST BRASS FITTINGS. PIPE AND FITTINGS FOR METERS LARGER THAN 2" SHALL BE DUCTILE IRON WITH FLANGED JOINTS.

MAINTAINED BY TOWN OF WEAVERVILLE

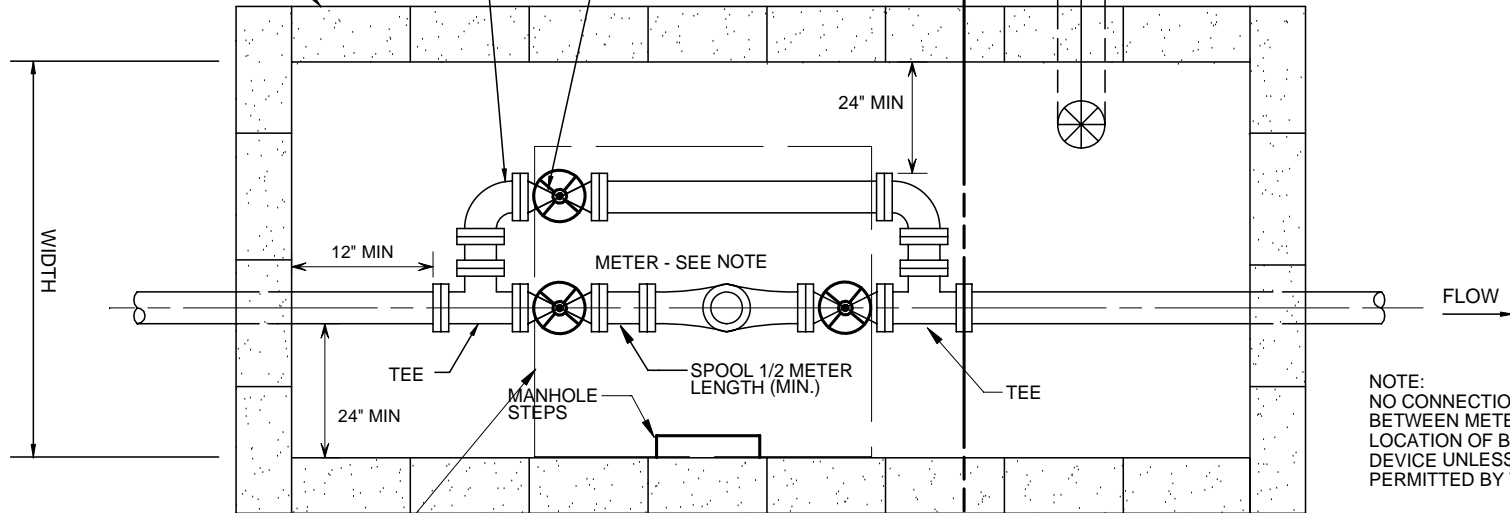
MAINTAINED BY PROPERTY OWNER

NOTE: SCH. 40 PVC DRAIN PIPE TO FREE DISCHARGE @ MIN. 1% SLOPE.
DRAIN SIZE = 4" FOR METERS LESS THAN 3", 6" FOR 4" & 6" METERS, FOR METERS LARGER THAN 6" CONTACT WATER DEPT.

8"x 8"x 16" CONC. BLOCKS

OS&Y GATE VALVE (TYP)
2" & SMALLER - STOCKHAM FIG. B-138
OR - CRANE FIG. 459
3" & LARGER - MUELLER 2360

WIDTH



ACCESS DOOR
2" - 4" METERS - BILCO "J" 3'-0" x 3'-0"
6" & LARGER - BILCO "JD" / 2 4'-0" x 4'-0"
HINGE THIS SIDE

NOTE:
NO CONNECTIONS ARE PERMITTED BETWEEN METER VAULT AND LOCATION OF BACKFLOW PREVENTION DEVICE UNLESS SPECIFICALLY PERMITTED BY THE TOWN

NOTE:
METER SHALL BE AS SPECIFICALLY SPECIFIED BY THE TOWN FOR THE SPECIFIC APPLICATION